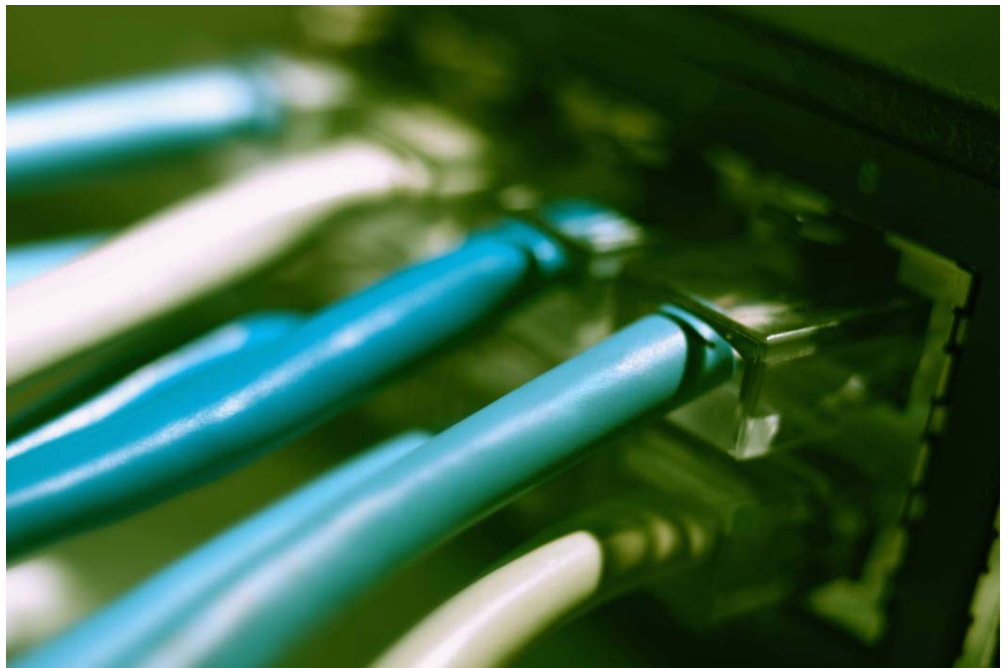


# B I C S I B e l g i u m

## Benelux Conference 9 June 2004

**Y o u r  
c o n n e c t i o n  
t o t h e  
f u t u r e i s  
h e r e t o d a y**



Dear Sir, Madam,

You are hereby kindly invited to our full day conference.

BICSI was founded in 1974 to serve and support telephone company building industry consultants (BICs) responsible for the design and distribution of telecommunications cabling in commercial and multi-family buildings. BICSI is a non-profit-making association assisting telecommunications professionals with their careers by providing training, certification, conferences and publications in the design and installation of voice, data and video technologies. The membership base of 25.000 covers over 100 countries around the globe.

Our next full day conference is scheduled for the 9th of June 2004 at the Elewijt Center near Brussels (see <http://www.elewijtcenter.be> for location map and driving directions). We will welcome you starting from 8h00 in the morning to present the following program (see verso):

BICSI Belgium



Sponsored by



8h00	Registration, Small Breakfast & Welcome
8h30	BICSI RCDD Qualifications - are they important for winning cabling projects ? <i>John Laban, RCDD/LAN—BICSI/Annor</i>
8h45	European & Benelux Cabling Market <i>Dr. Greg Corty—BSRIA</i>
9h25	Defining Your Datacenter Performance <i>Xavier Pinchard, RCDD—DBAssociates</i>
10h05	Optical networks based on Plastic Optical Fiber: Components and Applications <i>Ronny Bockstaele—Phocon</i>
10h45	Break & Networking
11h10	Generic Cabling within Industrial Premises—The Cats Meets the Mice <i>Mike Gilmore—The Cabling Partnership</i>
11h50	Blown Fiber in Data Center Applications <i>Rob Cardigan, RCDD—Molex Premise Networks</i>
12h30	Lunch & Networking
13h30	Standard Data Center <i>Allan Nielsen—Tyco Electronics</i>
14h10	Network Critical Physical Infrastructure <i>Jack Hack—APC BeNeLux</i>
14h50	It's More Than Meets The Eye <i>Chris Chandler, RCDD—NORDX/CDT</i>
15h30	Break & Networking
15h50	Ethernet Goes Industry: Impact to Layer 1 Components <i>Hermann Christen, Director Business Management Industry, Engineer Economist—R&amp;M</i>
16h30	End User Case Story: Industrial Cabling at Opel Belgium <i>Hugo Eelen—Opel Belgium</i>
17h10	Closing Note <i>John Bakowski, RCDD/LAN/OSP, BICSI President-Elect</i>

If you have any questions, do not hesitate to give us a call at +32-3-680.20.40, mail to [bicsibelgium@bicsi.org](mailto:bicsibelgium@bicsi.org) or take a look at our site <http://www.bicsi.org>.

Please fax back this form to +32-3-685.02.87  
Places are limited!

- YES  
I will attend this conference day.  
I will pay by bank transfer to account 001-4257103-43, BICSI Belgium with reference *Conference Day 9/06/2004*.
- NO  
Unfortunately we cannot attend this event but please keep us informed on upcoming events and BICSI activities.

First Name : ..... Last Name : .....

Company : .....

Address : .....

Postal Code : ..... City : .....

Phone : ..... Fax : .....

E-Mail : .....

Member :  Yes and I will pay €100 (Membership Number: .....)

:  No and I will pay €220 (including one year membership)

**If you pay before 31 May, a discount of €50 is applicable.**  
\* A member can be accompanied by a non-member for €100 extra.